

062643

RECEIVED

LARAMIE COUNTY  
SOUTHWEST CORNER SECTION 29 T18N R65W  
CHEYENNE, WY.  
CERTIFIED LAND CORNER RECORDATION

'89 OCT 5 PM 3 01

DESCRIPTION OF CORNER EVIDENCE FOUND, AND ORIGINAL RECORD (if known)

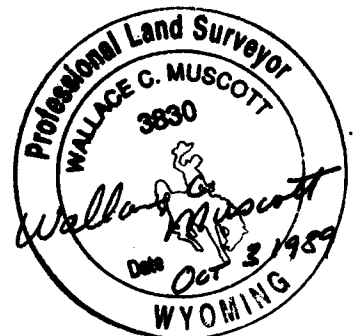
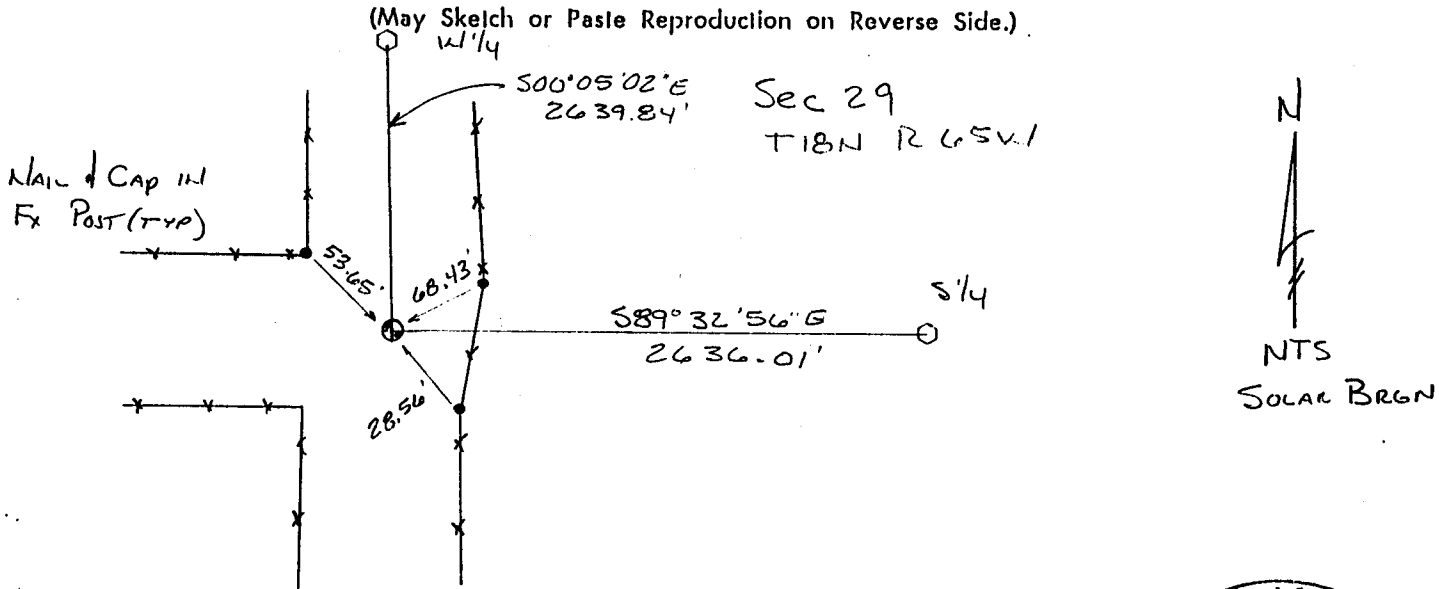
The original GLO 20x14x3 Limestone was not found. The corner falls in a North West road intersection. The corner was obliterated by the road construction. Laramie County records show "WCCR" stones were set at this corner. The WCCR stones were not found, but the fences in the area indicate the road right of way to be as marked by the WCCR stones. We reestablished the corner from the existing fences.

DESCRIPTION OF MONUMENT AND ACCESSORIES ESTABLISHED TO PERPETUATE THE ORIGINAL LOCATION OF THIS CORNER:

Set a 30" long No5 rebar with a Corps of Engineers Brass Cap at the corner. Tied the corner to the existing fences.

AUG 24 1989

SKETCH, WITH COURSE AND DISTANCE TO ADJACENT CORNER IF DETERMINED IN THIS SURVEY.



I, Wallace C. Muscott certify that I have carefully performed or reviewed the work done on the diagrammed corner as reported on this recordation form and approve the same.

Wallace C. Muscott 3830  
Signature of Surveyor Registration No.

STATE OF WYOMING,  
Office of Clerk and Recorder,  
County of \_\_\_\_\_

This "corner record" was filed for record on the \_\_\_\_\_ day of \_\_\_\_\_, 19\_\_\_\_, was noted on the cross-index plat and is assigned page No. \_\_\_\_\_, in book No. \_\_\_\_\_.

County Official			
Cross Index No. <u>V 5</u>	T. <u>18N</u>	R. <u>65W</u>	<u>6th</u> Mer.
_____	T. _____	R. _____	Mer.
_____	T. _____	R. _____	Mer.
_____	T. _____	R. _____	Mer.
_____	T. _____	R. _____	Mer.
_____	T. _____	R. _____	Mer.
_____	T. _____	R. _____	Mer.

BOOK 1278

1452